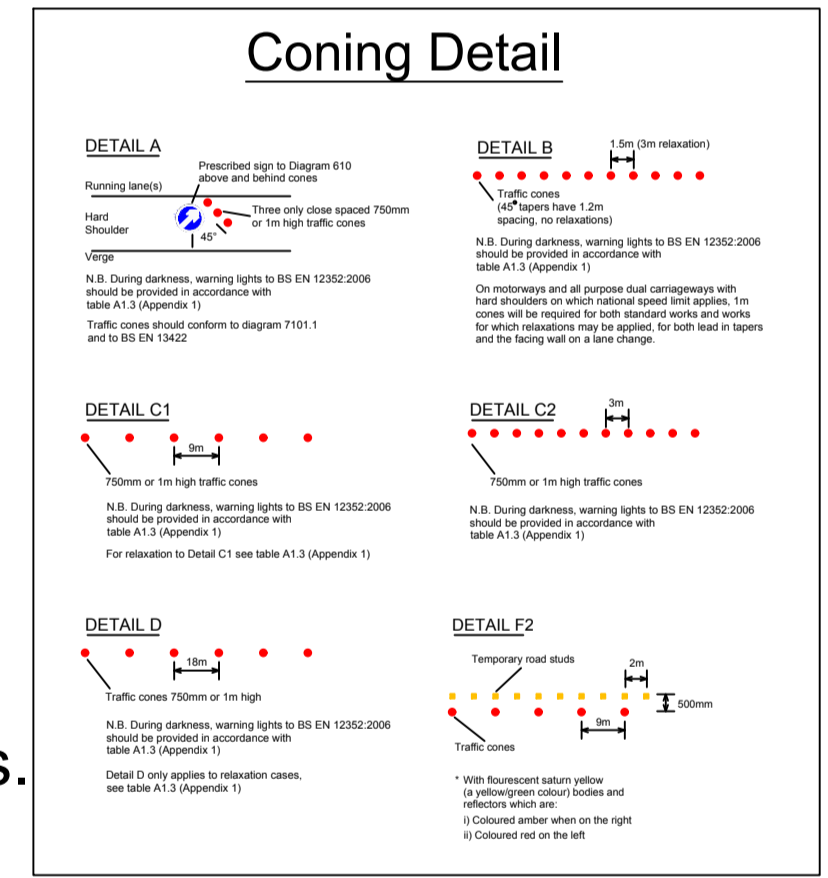
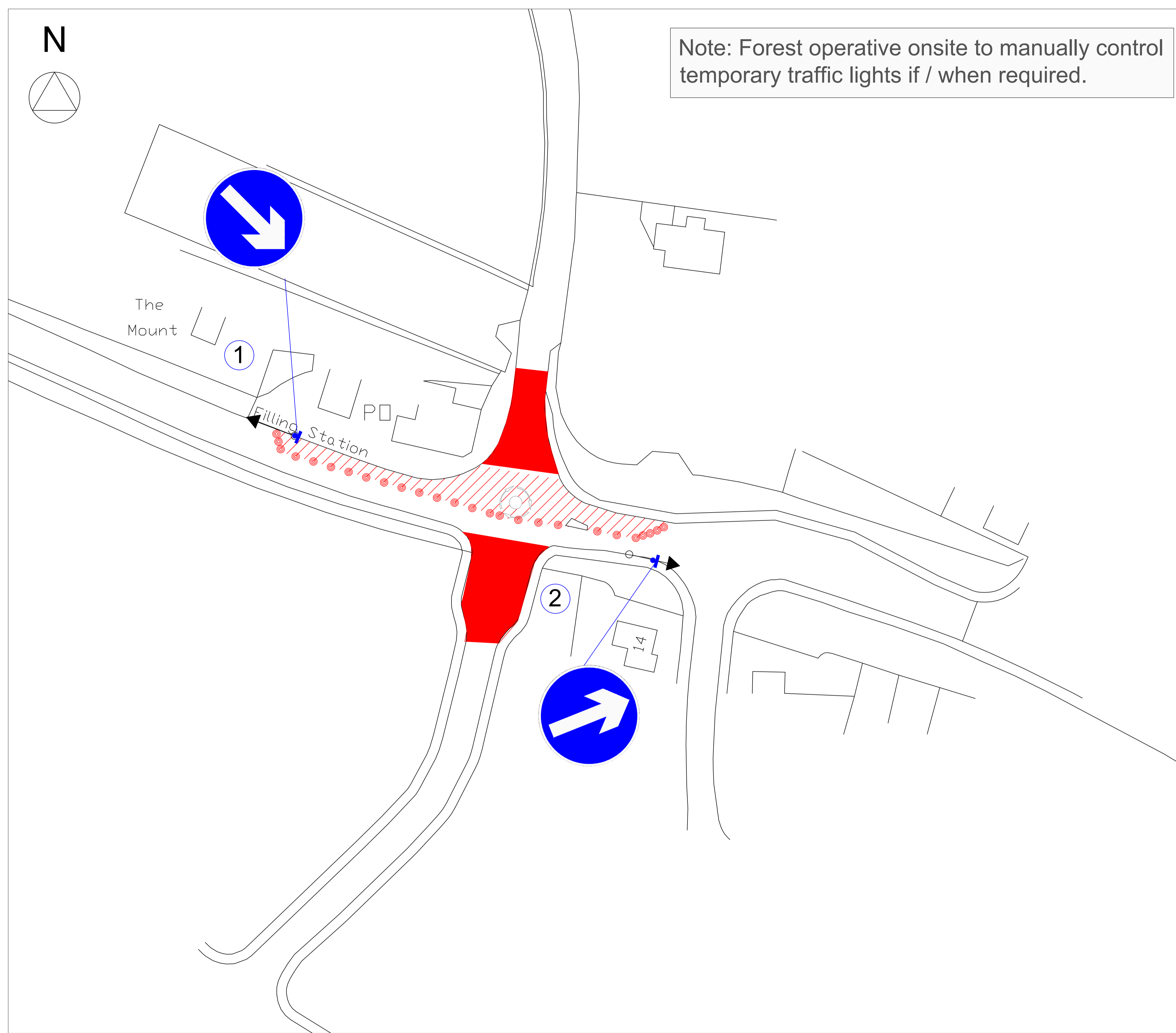
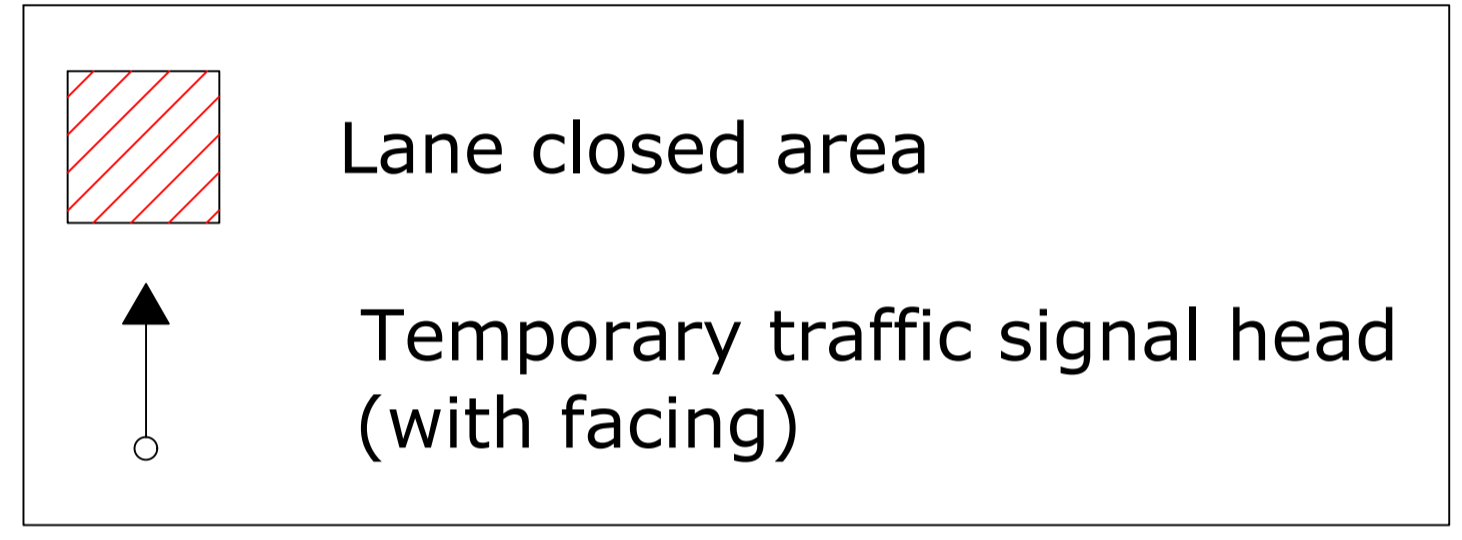
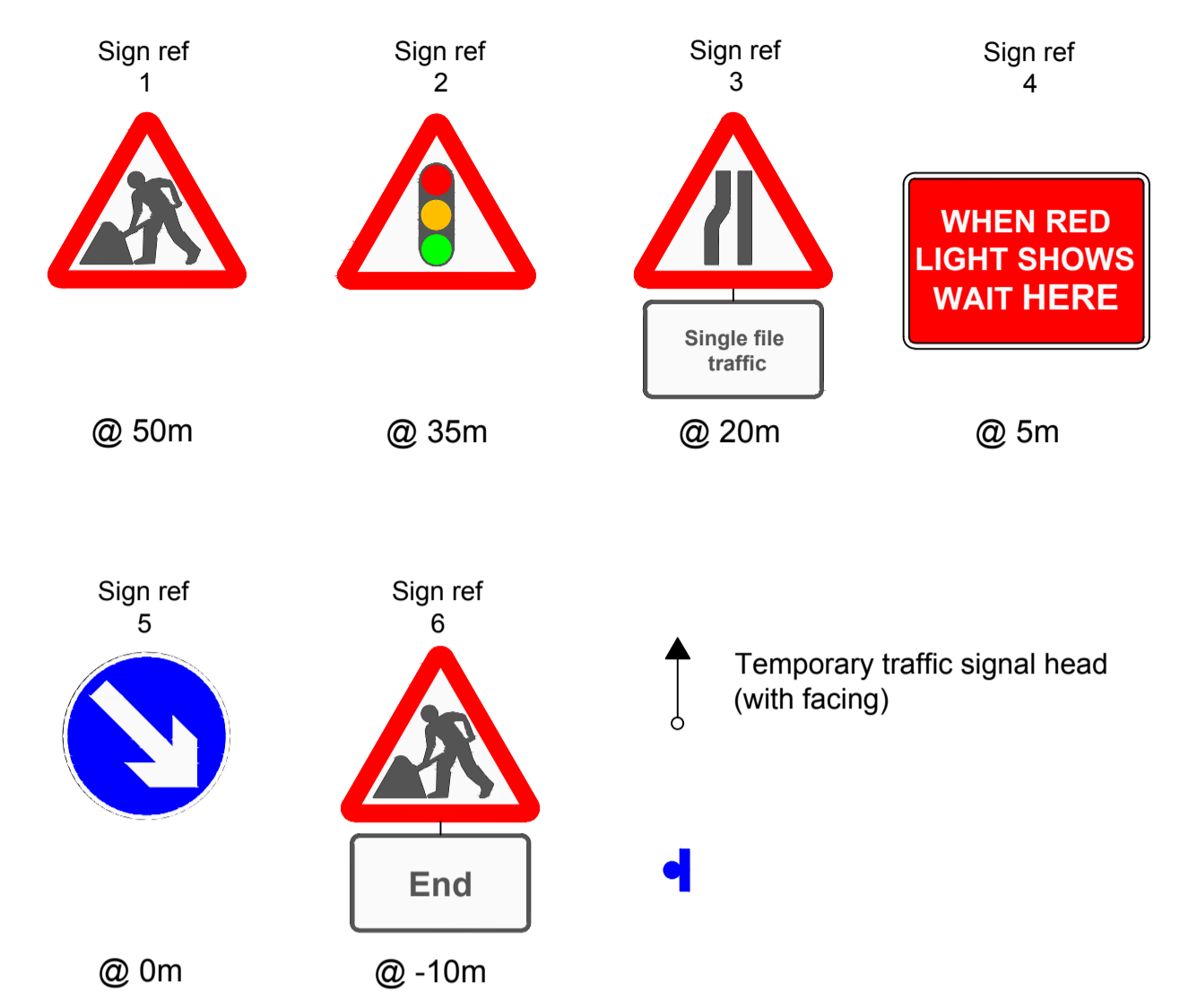


Note: Forest operative onsite to manually control temporary traffic lights if / when required.

Signs will be positioned on all approach roads at the distances specified (approximate distances measured from first cone in taper)



Times for traffic signals. All times are in seconds

Phase	1	2	3	4
Location of head	①	②	Not in use	Not in use
Red	15	15	0	0
Red/amber	2	2	0	0
Green	40	40	0	0
Amber	3	3	0	0
Phase total	60	60	0	0
Total for cycle				120

Drn: NR	<p>Forest Traffic Signals Ltd, Forest House, Broad Quay Road, Felnext Ind Est. Newport. NP19 4PN Tel: 01633 284700 Fax: 01633 283212</p>					<p>Client: Js Construction</p>	<p>Project: Cross House Shrewsbury SY5 6LQ</p>				<p>Drawing: ABC</p>	<p>Drawing no: 1000/TMA/01</p>	
Chk: WD												<p>Revision: A</p>	
App:												<p>Scale: 1:1000</p>	
Date: 17.09.2019													
Rev.	Dm.	Chk.	App.	Description	Date.	Office copy	Issued to site	Issued to client					